

TEMPERATURE SENSOR

TH-161

Applications:

Temperature sensor for measurement in food industry, pharmacy, cosmetics. The sensor is equipped with a special hygienic leak-proof joint (CLAMP).

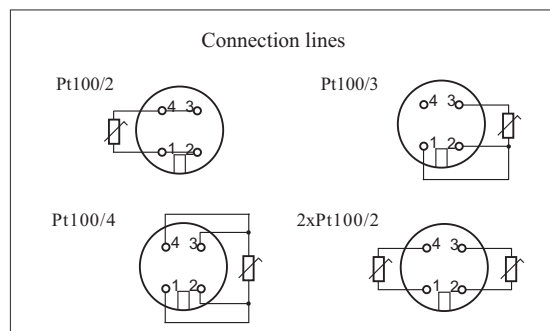
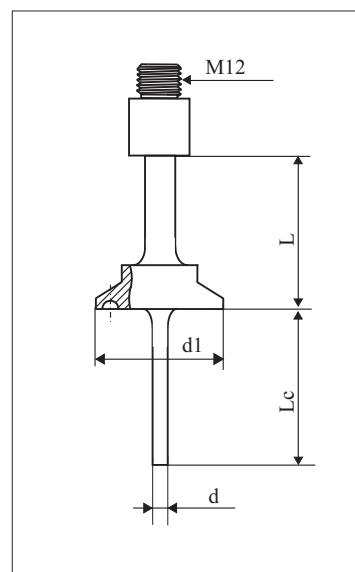
Technical Data

Measuring range	up to 200°C
Resistance element:	Pt100 up to PN-EN 60751+A2 Pt1000, Pt500
CLAMP joint material	stainless steel 316L (1.4404)
Process connection	M12 IP 67
Process connection ambient temperature	-25°C to 90°C
With transmitter	P - table of transmitters



Ordering code

TH	161								
Transmitter up to table e.g. P1									
Sensor diameter d									
∅ 6 mm 6									
others									
Process connection dimension									
DN15 DN15									
DN25									
DN50									
others									
Sensor length Lc									
40 mm 40									
others									
Length L									
40 mm 40									
others									
Connection line									
2-wire, 3-wire, 4-wire 2									
Tolerance									
klasa - A, B, 1/3B e.g. B									
Measuring insert									
Pt100, 2xPt100, others e.g. Pt100									



Order example:

TH-161-6-DN15-40-40-2-B-Pt100 - sensor of protection tube diameter d=6 mm, process connection Dn15, Lc length =40 mm, 2-wire, class B, Pt100.